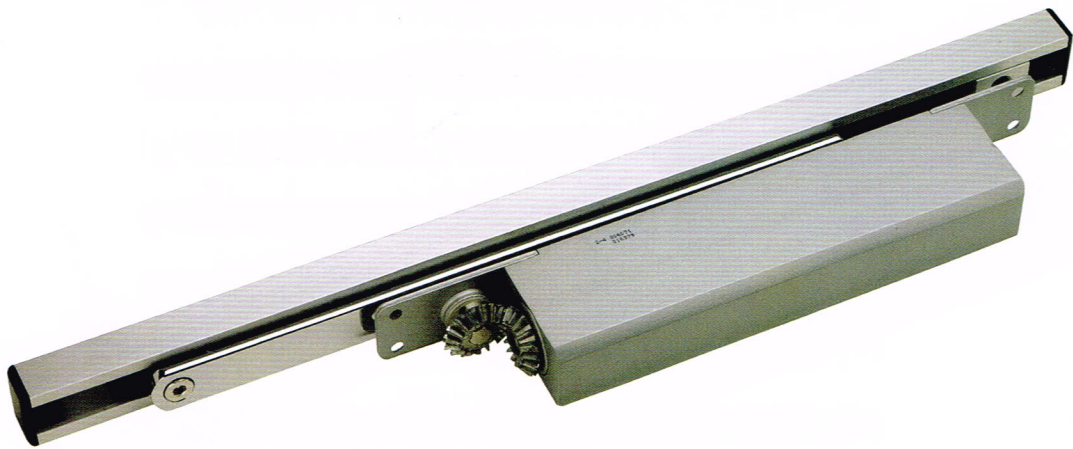




CONCEALED DOOR CLOSERS

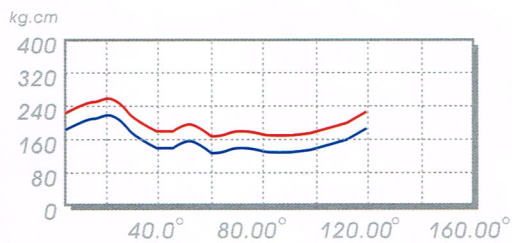


TC320 DOUBLE ACTION

CONCEALED DOOR CLOSERS



Tested to EN 1154 **483113**
by Warrington APT Laboratories, UK
Power size 3 and fire tested



Sliding Arm with Hold Open Function
High Efficiency of Opening and Closing



DATA AND FEATURES

TC320

Variable closing force	Spring strength (EN)	2 to 4
Standard doors	≤850mm ≤40kg	TC320
	≤950mm ≤60kg	TC320
	≤1100mm ≤80kg	TC320
Body dimensions (mm)	Length	210
	Width	53.5
	Thick	32
Arm	Standard	x
	Parallel	x
	Track (standard)	✓
	Track (hold-open)	✓
Double Action		○
Power shoe arm bracket		x
Angle of opening		120°
Power adjustable by spring		✓
Power adjustable by position		x
Sweep speed adjustable		✓
Latching speed adjustable		✓
Hold-open	Build in	x
	Hold open arm	x
Back-check	Self-regulating	x
	Adjustable at valve	x
Delayed action adjustable		x
Non-handed		✓
Application	Track arm	✓
	Parallel arm (66)	x
	Transom (61)	○
Guarantee / years		10 years

✓ =yes x=no ○ =option

GUARANTEE:

A free replacement ex-works of any closer proved defective by reason either of faulty manufactures or defect in materials.

BACK CHECK:

Provides a cushioning effect when the door is forcibly thrown open but does not serve as substitute for a door stop.

STANDARD FINISHES:

Sliver, dark brown or gold, other finishes upon request.

EN STANDARD CLOSERS
ECONOMICAL CLOSERS
SLIDING ARM SURFACE CLOSERS
CONCEALED CLOSERS
ELECTROMAGNETIC DOOR CONTROL
EXIT PANIC DEVICE
ACCESSORIES & CLOSER DESCRIPTION
TRANSOM CLOSERS & FLOOR HINGES
GLASS FITTINGS & SHOWER HINGES
EQUIPMENT



EN Fire Tested
EN 1154 Tested
By L.K., Germany, Singapore...